

Design features

- Working pressure MOP (PN) 16
- Made of ductile iron, epoxy powder coated
- Flange size according to EN 1092-2 | PN 16
- Standard drilling to EN 1092-2 | PN 10

DN	L	Weight	
80	330	27,0	
100	360	34,0	
150	440	46,0	
200*	520	59,7	
250*	700	135,0	
300*	800	186,0	

* Also available drilled to EN 1092-2 | PN 16
(Please specify on order)

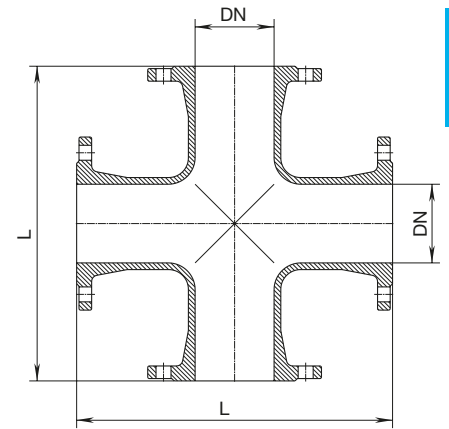
Design features

- Working pressure MOP (PN) 16
- Made of ductile iron, epoxy powder coated
- Flange size according to EN 1092-2 | PN 16
- Standard drilling to EN 1092-2 | PN 10
- On request: No. 8751 with vertical connection DN 100 (additional price)

DN	L	Weight	
200*	400	60,0	
250*	460	91,0	
500	830	333,0	

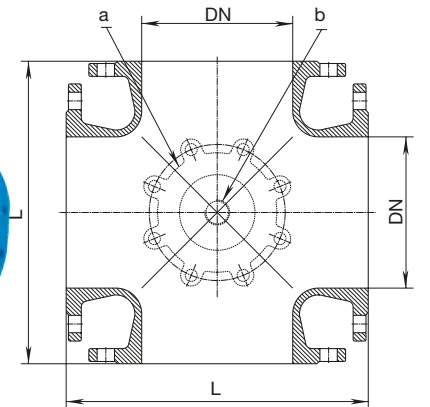
All flanged crosses

TT-piece
No. 8520



All flanged short cross

TT-piece
No. 8750



* Also available drilled to EN 1092-2 | PN 16
(Please specify on order)